
Rush Line Commuter Bus

Feasibility Study

Speaker

Frank Loetterle, PhD, AICP
Senior Associate
SRF Consulting Group
Minneapolis, MN

Study Purpose

- Explore the Feasibility of Establishing Long-Distance Express Commuter Bus Service in the Rush Line Corridor.
- The 80-mile Rush Line Corridor begins at the Union Depot in downtown St. Paul and generally follows Highway 61 and Interstate 35/35E north through Ramsey, Washington, Anoka, Chisago and Pine Counties to Hinckley.



Rush Line Task Force

- Ramsey County Regional Rail, Chair
- Anoka County Regional Rail
- Chisago County Regional Rail
- Pine County
- Washington County Regional Rail
- Centerville
- Columbus
- Forest Lake
- Harris
- Hinckley
- Hugo
- Little Canada
- Maplewood
- North Branch
- Pine City
- Rock Creek
- Rush City
- St. Paul
- Sandstone
- Stacy
- White Bear Lake
- White Bear Township
- Wyoming
- Wyoming Township

Study Objectives

- Define the Transit Market for Service to St. Paul and Minneapolis
- Develop and Evaluate Service Options
- Engage in Public Outreach
- Develop Priorities for Service Implementation
- Identify
 - Cost
 - Funding Options
 - Potential Operators

Purpose of this Meeting

- These Open Houses are being held to provide a chance for the Public to be involved in the Study.
 - ❑ Present Background Information
 - ❑ Answer your Questions
 - ❑ Listen to your Suggestions
 - ❑ Record your Input

What is Express Commuter Bus Service

- Long Distance
- Limited Stops
- High Speed
- Schedules Oriented Around Commuting
- Coach Style Buses

- Similar to North Star Commuter Bus Service



Scenarios Being Studied

- Service from Forest Lake to
 - Downtown Minneapolis
 - Downtown St. Paul

- Service from Hinckley to
 - Downtown Minneapolis
 - Downtown St. Paul

Equipment Options

- Transit Style Bus
 - 38-42 Seats
 - Low Floor
 - Multiple Doors
 - Low Back Seating

- \$325,000 per Bus



Equipment Options

- Coach Style Bus
 - ❑ 55 Seats
 - ❑ High Floor
 - ❑ Single Front Door
 - ❑ High Back Seating
- \$435,000 per Bus



Possible Amenities



- High Backed Seats
- Overhead Luggage Space
- Free Newspapers
- TV Monitors
- Bathroom
- Wireless Internet Access

Schedule

- Buses will operate:
 - To St. Paul and Minneapolis in the morning.
 - From St. Paul and Minneapolis in the afternoon.
- Trips will be timed to arrive and leave the downtown areas to accommodate daily work schedules.
- Stops in the Downtown will be centrally located to employment concentrations.

Alternative A

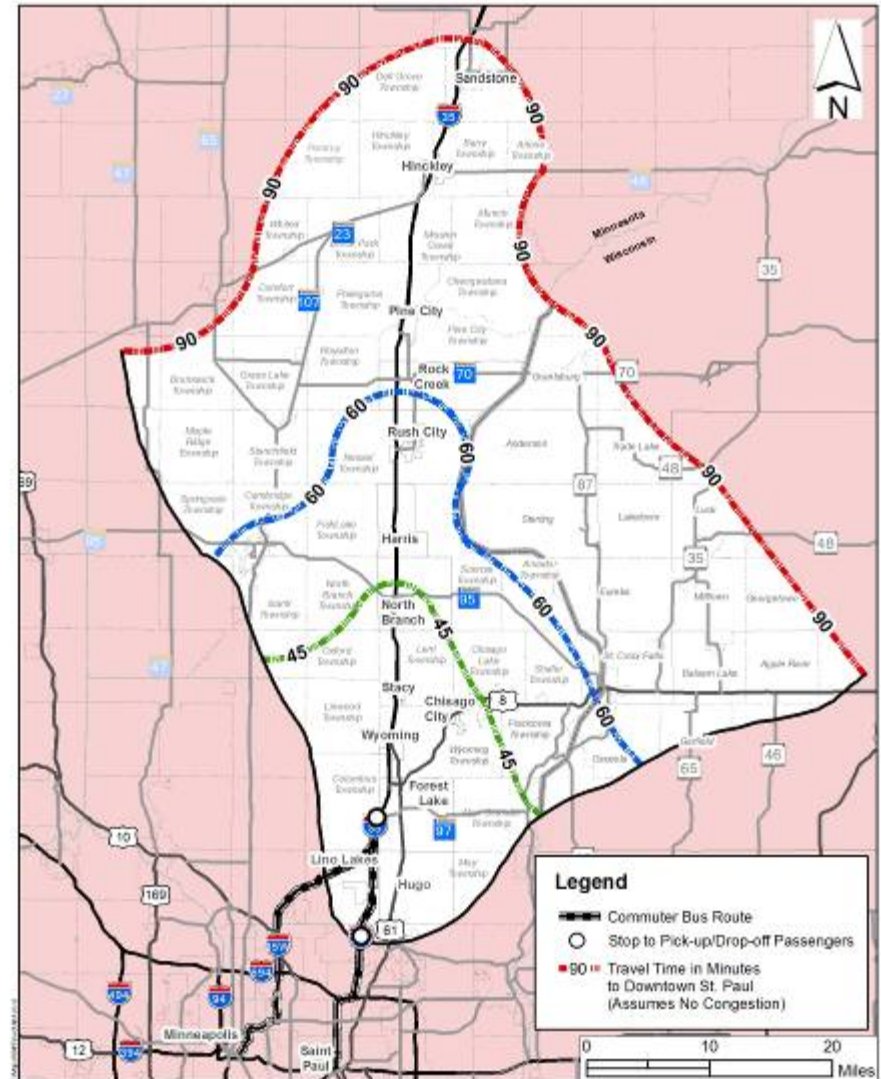
Forest Lake-St. Paul

- Possible Stations:
 - Forest Lake
 - White Bear Lake

- Possible Downtown St. Paul Stops:
 - 5th and Minnesota
 - St. Paul Union Depot

- Number of Trips:
 - 4 trips Inbound in the morning
 - 4 trips Outbound in the afternoon

- Time to/from Forest Lake:
 - 43 – 48 minutes

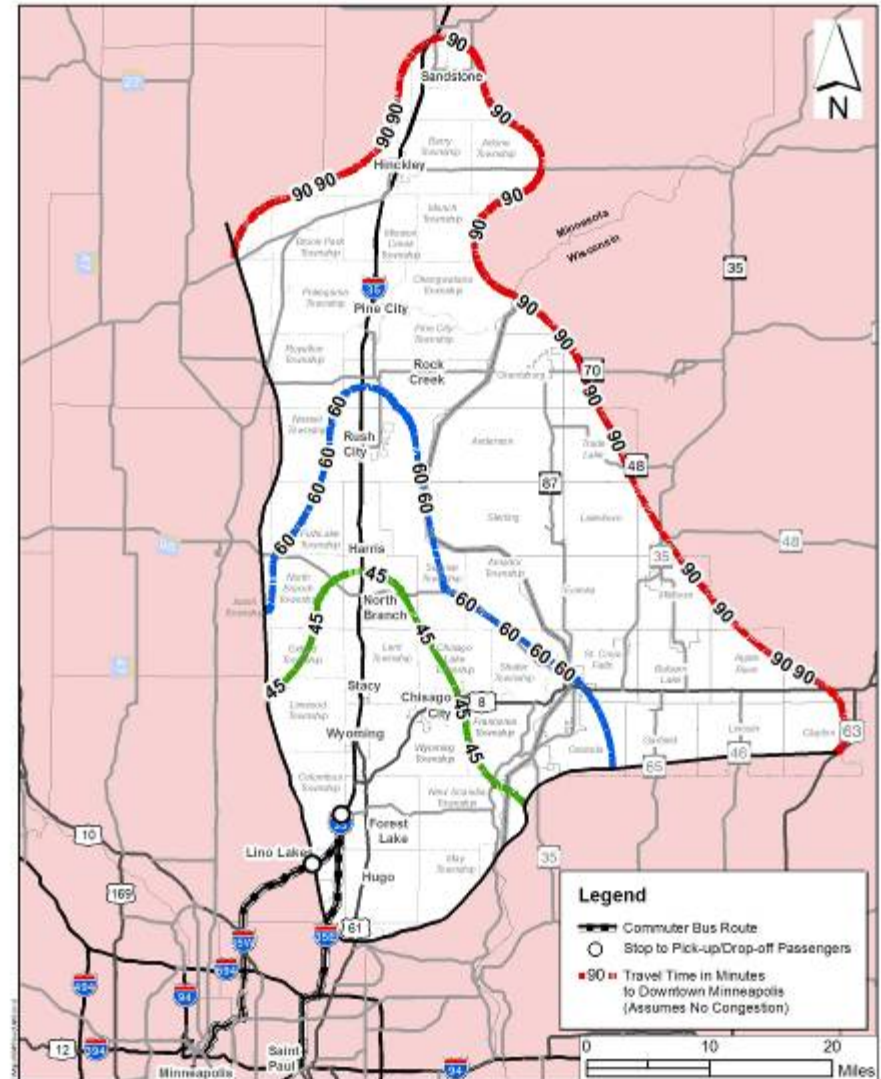


SRF CONSULTING GROUP, INC.
 COMMUTER BUS SERVICE AREA
 SERVICE TO ST. PAUL (LAST PICK-UP AT WHITE BEAR LAKE) — Alternative A
 RUSH LINE COMMUTER BUS STUDY
 Ramsey County Regional Rail Authority

Alternative B

Forest Lake-Minneapolis

- Possible Stations:
 - Forest Lake
 - Lexington or Lino Lakes
- Possible Downtown Minneapolis Stops:
 - Gateway Transit Center
- Number of Trips:
 - 4-6 trips Inbound in the morning
 - 4-6 trips Outbound in the afternoon
- Time to/from Forest Lake:
 - 50 – 60 minutes



SRF CONSULTING GROUP, INC.
 COMMUTER BUS SERVICE AREA
 SERVICE TO MINNEAPOLIS (LAST PICK-UP AT LEXINGTON)
 RUSH LINE COMMUTER BUS STUDY
 Ramsey County Regional Rail Authority
 Alternative B

Alternative C

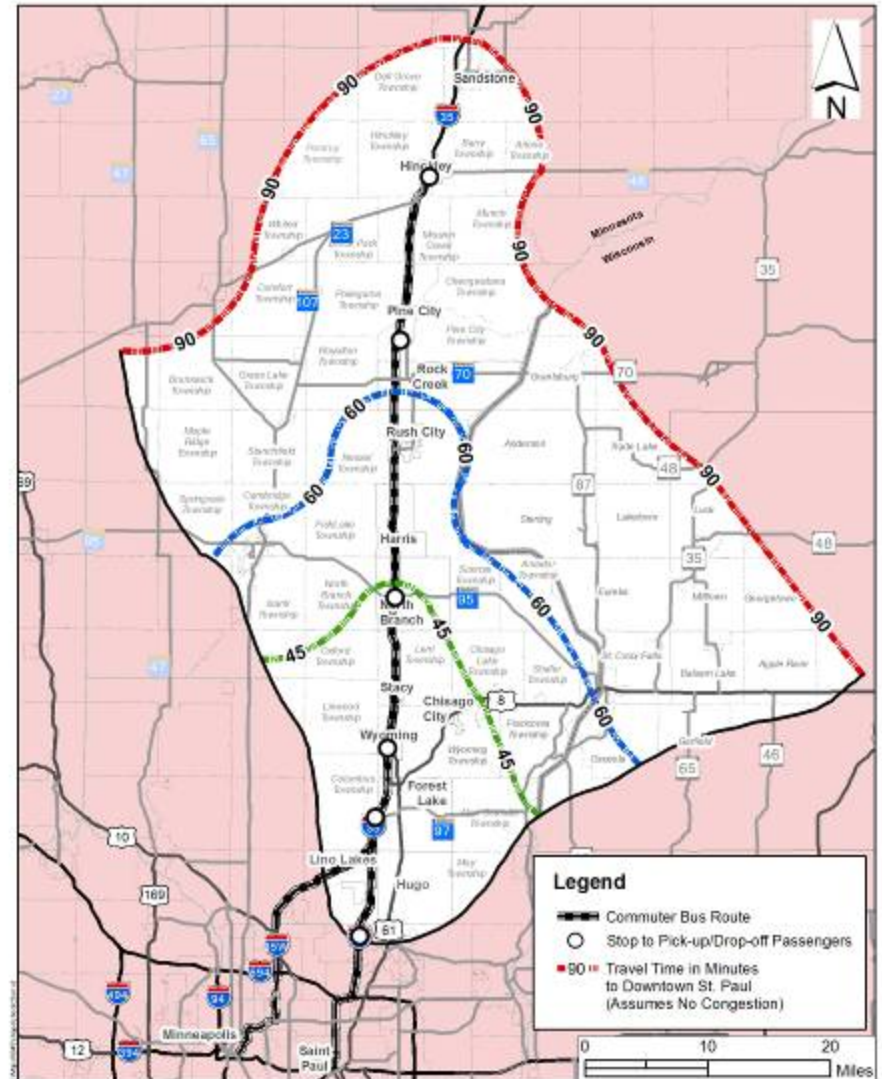
Hinckley-St. Paul

- Possible Stations:
 - Hinckley Wyoming
 - Pine City Forest Lake
 - North Branch White Bear Lake

- Possible Downtown St. Paul Stops:
 - 5th and Minnesota
 - St. Paul Union Depot

- Number of Trips:
 - 4 trips Inbound in the morning
 - 4 trips Outbound in the afternoon

- Time to/from Hinckley:
 - About 1 hr 45 minutes



SRF CONSULTING GROUP, INC. ENGINEERS | PLANNERS | DESIGNERS

COMMUTER BUS SERVICE AREA
SERVICE TO ST. PAUL (LAST PICK-UP AT WHITE BEAR LAKE) Alternative C

RUSH LINE COMMUTER BUS STUDY
 Ramsey County Regional Rail Authority

Alternative D

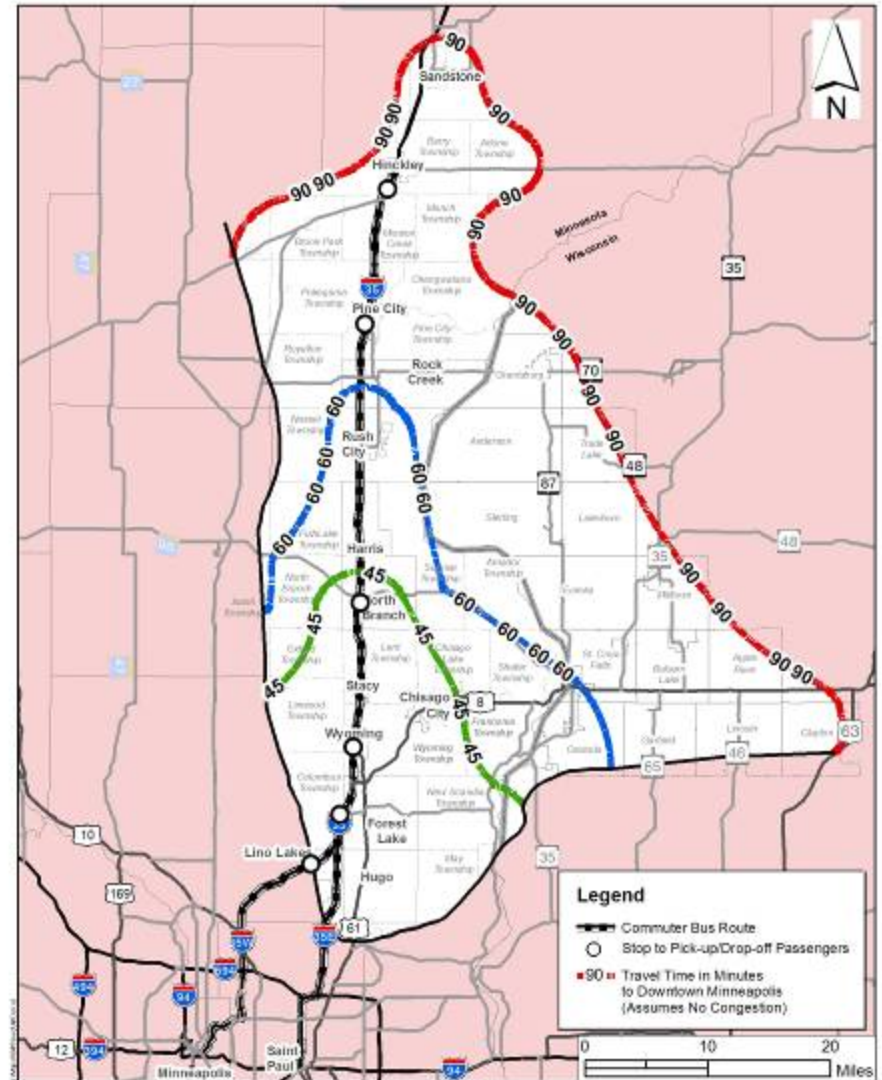
Hinckley-Minneapolis

- Possible Stations:
 - Hinckley Wyoming
 - Pine City Forest Lake
 - North Branch Lexington

- Possible Minneapolis Stops:
 - Gateway Transit Center

- Number of Trips:
 - 4-6 trips Inbound in the morning
 - 4-6 trips Outbound in the afternoon

- Time to/from Hinckley:
 - About 1 hr 45 minutes



SRF CONSULTING GROUP, INC. **COMMUTER BUS SERVICE AREA**
 SERVICE TO MINNEAPOLIS (LAST PICK-UP AT LEXINGTON) **Alternative D**
 RUSH LINE COMMUTER BUS STUDY
 Ramsey County Regional Rail Authority

Next Steps



- Estimate Potential Ridership
- Estimate Operating Costs
- Estimate Capital Costs
- Develop Service Proposal

Schedule

- July 2007
 - Ridership Results
 - Financial Analysis
 - Select Preferred Operating Strategy
- August 2007
 - Implementation Plan
- Future
 - Initiation of Service
(if found to be feasible)

Questions?

- For additional information please contact:
 - Alicia Vap
 - Alicia.Vap@co.ramsey.mn.us